

RS1 -
DEPTH - 350 MM
M. STEEL - # 12 @ 175 C/C EACH WAY TOP
10 @ 200 C/C EACH WAY BOTTOM

RS2 -
DEPTH - 300 MM
M. STEEL - # 12 @ 175 C/C EACH WAY TOP
10 @ 175 C/C EACH WAY BOTTOM

RS3 -
DEPTH - 350 MM
M. STEEL - # 12 @ 150 C/C EACH WAY TOP
10 @ 150 C/C EACH WAY BOTTOM

RS4 -
DEPTH - 275 MM
M. STEEL - # 10 @ 175 EACH
WAY TOP & BOTTOM

RS5 -
DEPTH - 275 MM
M. STEEL - # 10 @ 200 EACH
WAY TOP & BOTTOM

RS6 -
DEPTH - 150 MM
M. STEEL - # 8 @ 300 EACH
WAY TOP & BOTTOM

RS7 -
DEPTH - 150 MM
M. STEEL - # 8 @ 300 EACH
WAY TOP & BOTTOM

RW1/RW5 -
THK - 350 TO 200
VERT. STEEL -
OUTER FACE
MAIN VERT. STEEL # 10 @ 300 MM C/C FROM BASE TO TOP OF WALL +
CURTLED VERT. STEEL # 10 @ 300 MM C/C FROM BASE TO 2.0 M IN
BETWEEN MAIN VERT STEEL BAR

INNER FACE
MAIN VERT. STEEL # 12 @ 300 MM C/C FROM BASE TO TOP OF WALL +
CURTLED VERT. STEEL # 12 @ 300 MM C/C FROM BASE TO 3.0 M IN
BETWEEN MAIN VERT STEEL BAR

INNER FACE
MAIN VERT. STEEL # 12 @ 180 MM C/C FROM BASE TO TOP OF WALL +
CURTLED VERT. STEEL # 12 @ 180 MM C/C FROM BASE TO 3.0 M IN
BETWEEN MAIN VERT STEEL BAR

INNER FACE
MAIN VERT. STEEL # 12 @ 180 MM C/C FROM BASE TO TOP OF WALL +
CURTLED VERT. STEEL # 12 @ 180 MM C/C FROM BASE TO 3.0 M IN
BETWEEN MAIN VERT STEEL BAR

HORIZ. STEEL - # 10 @ 130 C/C UP TO 3.00 M BOTH FACES
10 @ 175 C/C ABOVE 3.00 M TO TOP BOTH FACES

RW2 -
THK - 350 TO 200
VERT. STEEL -
OUTER FACE
MAIN VERT. STEEL # 10 @ 50 MM C/C FROM BASE TO TOP OF WALL +
CURTLED VERT. STEEL # 10 @ 50 MM C/C FROM BASE TO 2.0 M IN
BETWEEN MAIN VERT STEEL BAR

INNER FACE
MAIN VERT. STEEL # 12 @ 300 MM C/C FROM BASE TO TOP OF WALL +
CURTLED VERT. STEEL # 12 @ 300 MM C/C FROM BASE TO 3.0 M IN
BETWEEN MAIN VERT STEEL BAR

RW3 -
THK - 350 TO 200
VERT. STEEL -
OUTER FACE
MAIN VERT. STEEL # 10 @ 50 MM C/C FROM BASE TO TOP OF WALL +
CURTLED VERT. STEEL # 10 @ 250 MM C/C FROM BASE TO 2.0 M IN
BETWEEN MAIN VERT STEEL BAR

INNER FACE
MAIN VERT. STEEL # 12 @ 300 MM C/C FROM BASE TO TOP OF WALL +
CURTLED VERT. STEEL # 12 @ 300 MM C/C FROM BASE TO 2.0 M IN
BETWEEN MAIN VERT STEEL BAR

HORIZ. STEEL - # 10 @ 150 C/C UP TO 2.00 M BOTH FACES
10 @ 175 C/C ABOVE 2.00 M TO TOP BOTH FACES

RW4/RW10 -
THK - 350 TO 200
VERT. STEEL -
OUTER FACE & INNER FACE
MAIN VERT. STEEL # 12 @ 300 MM C/C FROM BASE TO TOP OF WALL +
CURTLED VERT. STEEL # 12 @ 300 MM C/C FROM BASE TO 2.0 M IN
BETWEEN MAIN VERT STEEL BAR

RW7 -
THK - 150 MM
VERT. STEEL - # 8 @ 150 C/C (BOTH FACES)
HORIZ. STEEL - # 8 @ 150 C/C (BOTH FACES)

RW8/RW9 -
THK - 350 TO 200
VERT. STEEL -
OUTER FACE
MAIN VERT. STEEL # 12 @ 300 MM C/C FROM BASE TO TOP OF WALL +
CURTLED VERT. STEEL # 12 @ 300 MM C/C FROM BASE TO 3.0 M IN
BETWEEN MAIN VERT STEEL BAR

INNER FACE
MAIN VERT. STEEL # 12 @ 180 MM C/C FROM BASE TO TOP OF WALL +
CURTLED VERT. STEEL # 12 @ 180 MM C/C FROM BASE TO 3.0 M IN
BETWEEN MAIN VERT STEEL BAR

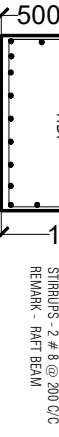
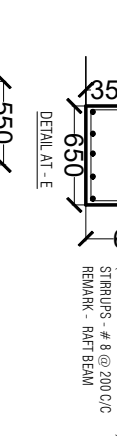
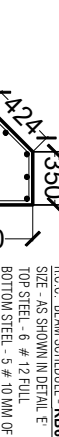
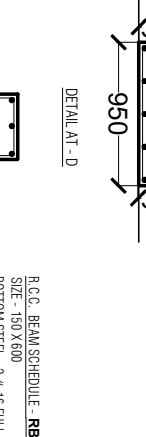
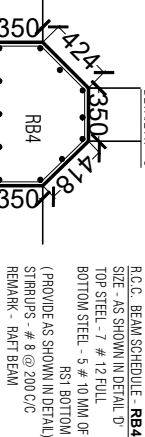
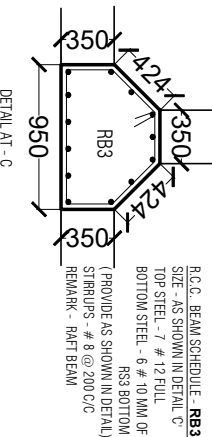
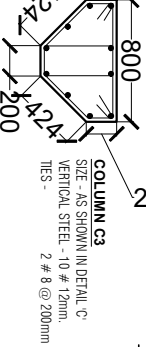
HORIZ. STEEL - # 10 @ 130 C/C UP TO 3.00 M BOTH FACES
10 @ 175 C/C ABOVE 3.00 M TO TOP BOTH FACES

RW11/RW13 -
THK - 200 MM
VERT. STEEL - # 10 @ 200 C/C (BOTH FACES)
HORIZ. STEEL - # 8 @ 150 C/C (BOTH FACES)

RW14 -
THK = 350 TO 200 THK
VER. STEEL - # 10 @ 150 C/C OUTER FACE
+ # 10 @ 150 C/C INNER FACE
HORIZ. STEEL - # 12 @ 150 C/C EACH FACE

RW 150 -
THK - 100 MM
VERT. STEEL - # 8 @ 150 C/C
HORIZ. STEEL - # 8 @ 150 C/C

RCC COLUMN SCHEDULE :-



ONLY FOR TENDER PROPOSE

COPYRIGHT NOTE
THIS DRAWING IS SOLE PROPERTY OF B.S.PATEL ASSOCIATES. THE COPYRIGHT OF THIS DRAWING REMAINS WITH US. THIS DRAWING MUST NOT BE REPRODUCED OR COPIED IN ANY MANNER WITHOUT OUR CONSENT. EMPLOYER OR BE COPIED OR ALTERED OR USED FOR THE PURPOSE OF CONSTRUCTION OR MANUFACTURING ANY ARTICLE SHOWN IN THIS DRAWING. THIS DRAWING ALONG WITH COPIES MADE BY THE RECIPIENT SHALL BE RETURNED ON DEMAND TO US.

NOTE
1. ALL DIMENSIONS ARE IN MTR.
2. ONLY WRITTEN DIMENSIONS TO BE FOLLOWED.
3. DO NOT SCALE THE DRAWING.
4. IN CASE OF ANY AMBIGUITY OR DISCREPANCY, CONTACT THE ARCHITECTS.
5. REFER THIS DRAWING ALONG WITH THE STRUCTURAL ENGINEER'S DRAWINGS.
6. REFER STRUCTURAL ENGINEER'S DRAWINGS FOR REINFORCEMENT DETAILS.
7. CONSTRUCTION SHALL BE DONE ONLY AFTER THE APPROVAL FROM THE LOCAL AUTHORITY.

NO	REVISION	DATE	CLIENT
RI	RAFT/WALL/COLUMN/BEAM SHOWN	13-01-2022	

NO	REVISION	DATE	CLIENT

NO	REVISION	DATE	CLIENT

SHEET TITLE :-		ARCHITECT	
PROJECT	INDUSTRY PROJECT	PROJECT NO	
SITE ADDRESS		ARCHITECTURAL & STRUCTURAL ENGINEER	B.S.PATEL
		REGISTERED PROFESSIONAL ENGINEER (SPECIALISED IN STRUCTURAL)	
		REG. NO. - 15020/2008/02 (M) 50282/08/01	
		OFF. - 10231/2023/02 (M) 50282/08/01	
CHECKED BY	DATE	SCALE	SHEET NO
B.S.PATEL	JUN 2	1:50	ES